



STYLISH
MODERN
APARTMENTS



WILHELMIN

STAY & ENJOY, WORK & LIVE.

The completely new concept behind the building complex is impressive both inside and outside because of its well-planned, innovative design and convincing international culinary range.

111 Apartments,
4 Restaurants,
226 Parking spaces,
in a prime location

The "WILHELMIN" has established itself in the magical triangle formed by the Ludwigskirche, the Staatstheater, and the pedestrian zone as a hip oasis in the center of Darmstadt. There's never been a property quite like this one – and it's actually been missing for some time. This is a place where trendy gastronomy and stylish ambience collide. The spacious outside seating areas with palm trees and oleander give rise to that familiar vacation feeling. Following a comprehensive renovation and new design, 8,000 square meters are now available.

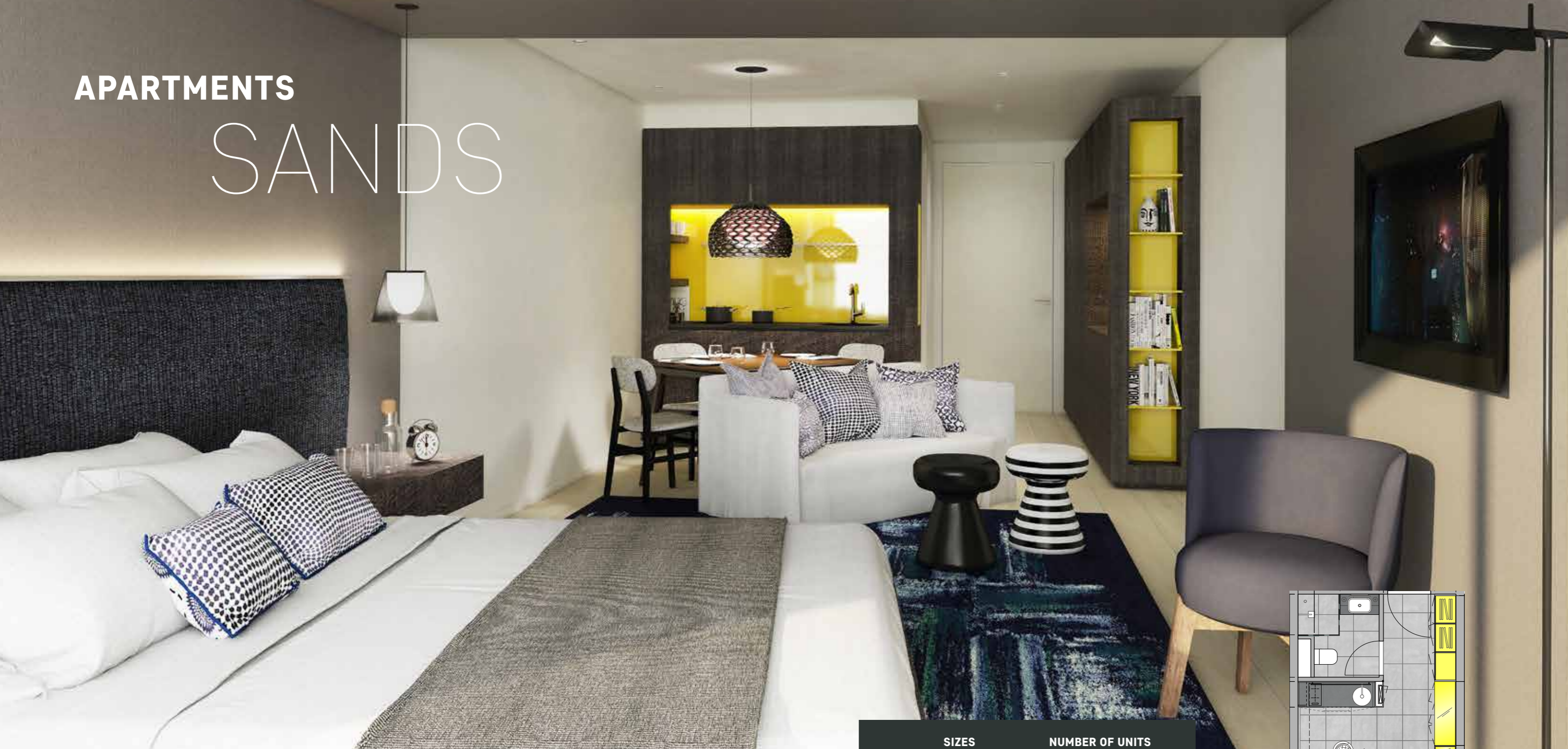
With three lower levels, the freshly renovated parking garage offers 226 spaces and guarantees short distances to the city. The ground floor is home to four restaurants and, fittingly, a cooking school and a retail shop.

Additionally, here you will also find a coworking space: viable, open workspaces that provide freelancers, startups, and anyone without a personal office with a useful, common infrastructure.

On the floors above, 111 new apartments have been erected. These are predominantly one-bedroom apartments, which are 32 square meters large on average. All of which have been furnished with tasteful and high-quality furniture conceived by a team from star designer Philipp Starck. Each apartment contains a single kitchen, a bathroom with a floor-level, walk-in shower, and some come with a loggia. These furnished apartments offer business people, students, and professionals with a comfortable home.



APARTMENTS SANDS








AMENITIES

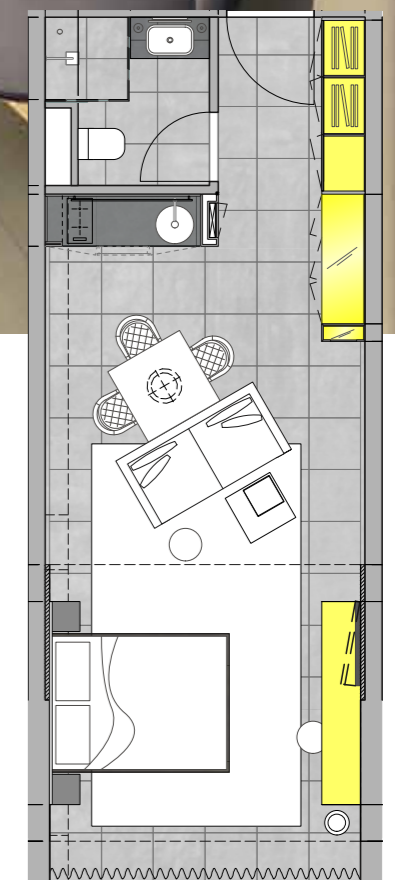
Feel like the landgrave of Darmstadt or a prince and princess. With exclusive furniture and box-spring beds, we have created a cozy home. Thanks to a fully equipped kitchen with a Nespresso machine, microwave, refrigerator, and ceramic stovetop, you can prepare your favorite dishes at any time. Maintain your personal care in an exclusive bathroom or make yourself comfortable in the comfortable dining area or in the living room with a 43" TV.

TECHNOLOGY & SAFETY

With a living area starting at 25 m, the apartments provide sufficient space, completely equipped with a kitchenette and homely furniture. All staircases are video monitored for your safety, and, of course, there are fire alarms in all apartments and corridors, gigabit fire-optic WIFI, and IP-TV.

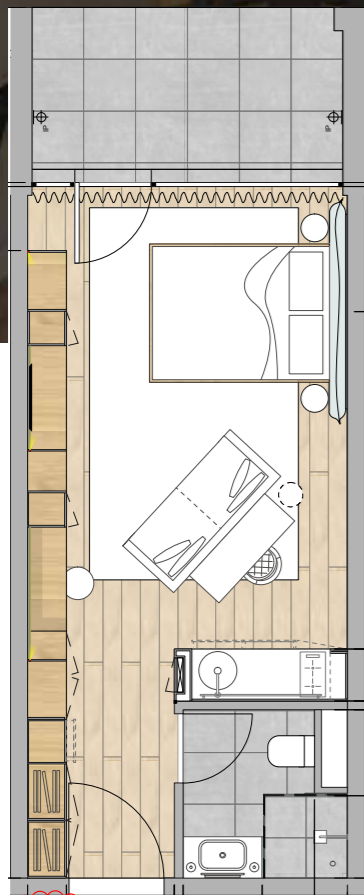
SIZES	NUMBER OF UNITS
31 - 38 m ²	42
39 - 44 m ²	9
45 - 51 m ²	8
60 - 90 m ²	8

- 
WLAN
- 
BALCONY
- 
TV
- 
ELEVATOR
- 
KITCHEN
- 
SAFE



APARTMENTS

TIMBER



SIZES	NUMBER OF UNITS
25 - 30 m ²	33
31 - 38 m ²	11

- WLAN
- BALCONY
- TV
- ELEVATOR
- KITCHEN
- SAFE

AMENITIES

Feel like the landgrave of Darmstadt or a prince and princess. With exclusive furniture and box-spring beds, we have created a cozy home. Thanks to a fully equipped kitchen with a Nespresso machine, microwave, refrigerator, and ceramic stovetop, you can prepare your favorite dishes at any time. Maintain your personal care in an exclusive bathroom or make yourself comfortable in the comfortable dining area or in the living room with a 43"TV.

TECHNOLOGY & SAFETY

With a living area starting at 25 m, the apartments provide sufficient space, completely equipped with a kitchenette and homely furniture. All staircases are video monitored for your safety, and, of course, there are fire alarms in all apartments and corridors, gigabit fire-optic WIFI, and IP-TV.



PLENTY FOR YOU UNDER ONE ROOF



PARKING GARAGE

Our brightly lit, modern parking garage with 226 parking spaces provides you and your visitors with the opportunity to take the elevator to your apartment and keep your feet dry.

CLEANING SERVICE

So, you like things clean and tidy? Once every two weeks, your apartment will receive a thorough cleaning. Afterwards, you'll come home to a clean, pristine apartment. You can wash your laundry yourself in a laundry and drying room.

RESTAURANTS

With four restaurants in the building, you won't have to cook. Regardless of whether you're in the mood for a quick bite to eat or a lavish meal, you'll always find what you're looking for. At L'OSTERIA, you'll be spoiled with noodles, pizza, and delicious desserts. BUTCHERS BAR & GRILL offers you excellent burgers and exceptional steaks. If you prefer Asian food, then COA WOK & BOWLS is the right place for you. If you're looking to enjoy an opulent breakfast with French delights on a Sunday morning (or any day of the week for that matter), go to LA MAISON DU PAIN. Maybe you'd rather eat breakfast in your apartment – no problem, here you'll be able to pick up fresh bread and rolls any day you please.

HELP-DESK

Are you new to the city and don't know where to go? Do you want to utilize a carsharing or call-a-bike service? Are you searching for a casual restaurant, a particular exhibition or simply the nearest pharmacy? We'll help you personally or with our hotline, naturally also for issues concerning your apartment.

COWORKING SPACE

In our coworking space, we offer you the opportunity to rent flexible workstations and meeting rooms with the necessary amenities directly in Wilhelmin. In a modern, creative atmosphere, you can work temporarily right from the building, but always with no commitment and flexible working hours.



IN THE CENTER OF DARMSTADT



RECREATION & SPORTS

Whether it's a Jugendstil pool, a gym, or a soccer field, you can participate in all kinds of recreational activities within walking distance.



CULTURE

The Staatstheater, which can be seen from the building, the Landesmuseum, smaller theatres, and movie theaters can be found in immediate proximity.



HISTORICAL

The artists' colony as a center of Jugendstil, along with the Russian Chapel, is located on the path to a World Heritage Site. The Hundertwasserhaus represents modernity. The Messel Pit World Heritage Site is of international significance.



NATURE

Darmstadt is also known as the "city in the woods", is surrounded by forest on all sides, and serves as the gate to Odenwald. The park grounds of Rosenhöhe, Steinbrücker Teich and Jagdschloss Kranichstein are located at the edge of the city.



BUSINESS

A modern congress center "Darmstadium" is used as a service provider by the Technical University, many international research institutes, the ESA/ESOC, Telekom, and major commercial enterprises. New startups are constantly expanding the economic basis. Are you looking for a worry-free, all-inclusive package? We have the perfect service for every guest.



INFRASTRUCTURE

"Luiseplatz", the central transport hub for public transportation is a three-minute walk from WILHELMIN. Darmstadt has an exceptionally developed tram and omnibus network. All commercial enterprises and research institutes are reachable via public transportation.



WILHELMIN

Wilhelminenstraße 10
Hügelstraße 37
64283 Darmstadt
Germany

Contact:
DCE Real Estate
Elisabethenstr. 21
64283 Darmstadt
Germany

Telephone +49 (0) 6151-13 62 364
Telefax +49 (0) 6151-13 60 53
info@dce-re.de

